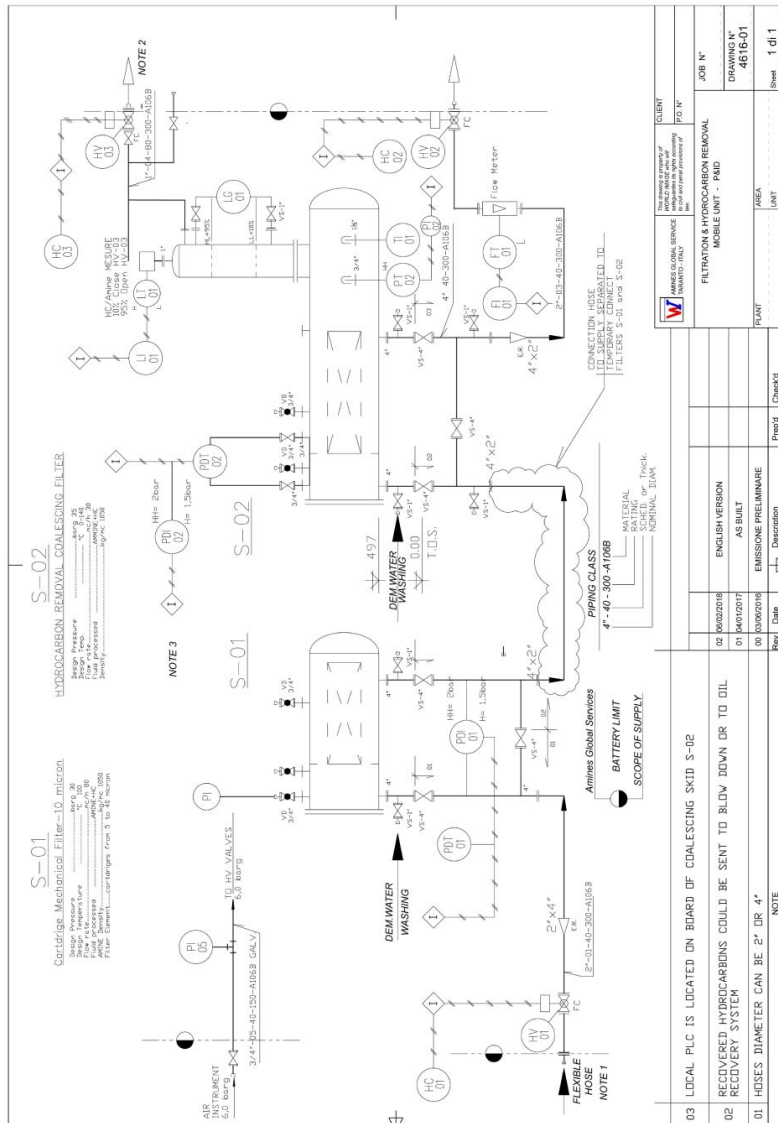


AMINE GLOBAL SERVICES



www.amine-gas-treatment.com

AMINE GLOBAL SERVICES

FILTRATION AND LIQUID/LIQUID COALESCER TECHNOLOGY AVAILABLE AS RENTAL SKIDS



FILTER



COALESCER

For emergencies, process optimizations, turnarounds and cleanups in gas treating amine units

Our filtration and liquid/liquid coalescing skids can be installed **immediately for emergency** upsets or used to reach longer-term product quality improvements.

- Rapid delivery of in-stock skids
- Flows: high flow rates designed for skids
- Liquids: 1 - 70 µm particulate removal
- Liquids/liquids separation to 15 ppm
- Technical assistance for rapid startup

Description

For more than 20 years AGS Amines Global Services has been solving complex contamination problems across the refining, petrochemical and oil and gas industries. By applying advanced filtration and separation technologies directly to the problem, we're able to help operators reduce maintenance costs and minimize unscheduled shutdowns. AGS fully automated coalescer skids, efficiently break stable emulsions, removal of hydrocarbons, removal of suspended solids, removal of foaming problems.

www.amine-gas-treatment.com

AMINE GLOBAL SERVICES

Features

- Flow capacity from 20 to 80 cu.m./h depending on viscosity, fluid densities and differential pressure between inlet/outlet connections. Contact Amines Global Services to discuss your specific application.
- PLC controlled filter and coalescing skid by means of: inlet/outlet SHUT-OFF VALVES, differential pressure transmitters, magnetic flow transmitters, interface level controller for AUTOMATIC DISCHARGE OF SEPARATED HYDROCARBONS.
- Inlet/outlet connections on both sides of skids to allow field piping options, by means of flexible hose connections
- Davited full-open closures
- Integrated, valved fluid sampling for influent and effluent samples
- Complies with refinery mechanical specifications
- Fork lift pockets for portability
- No need for operator assistance (optionally at start up)
- Easy and fast filter cartridge change out at ground level

Design specifications

- MOBILE FILTER SKID dimensions (LxWxH): 2.53 m x 1.36 m x 2.0 m.
- Skid Weight: Dry 1500 kg
- MOBILE COALESCER SKID dimensions (LxWxH) 3.5 x 2.0 x 3.4 m
- Skid weight: 2000 kg
- Vessel design: ASME CODE, SECTION VIII, DIV.1
- Piping design: ASME B31.3
- Inlet/outlet: 4", equipped with full port gate valves and by-pass valve
- Can be shipped via standard flatbed truck or inside a standard container

www.amine-gas-treatment.com

AMINE GLOBAL SERVICES

Applications

- System filtration down to 5 μm
- Remove hydrocarbons from **LEAN AMINE**
- Remove hydrocarbons from **RICH AMINE**
- Can be operated as a water washer
- Remove hydrocarbon from sour water



Coalescer by-pass & IN/OUT



Heavy hydrocarbons removed from MDEA

AMINES GLOBAL SERVICES

Via Ettore D'Amore n° 41

74121 Taranto - ITALY

Tel. +39 099 37 56 99 - Fax +39 099 737 92 41

E-Mail: specialtyamines@wimage.it

Web: www.amine-gas-treatment.com

www.amine-gas-treatment.com