



Amine Purification Unit (A.P.U.)

AMINES GLOBAL
SERVICE

EVALUATION FORM

To: **WORLD IMAGE s.r.l.**

Viale della Libertà n° 101
74020 Montemesola – Taranto –
ITALY
Tel: +39 099 46.41.667

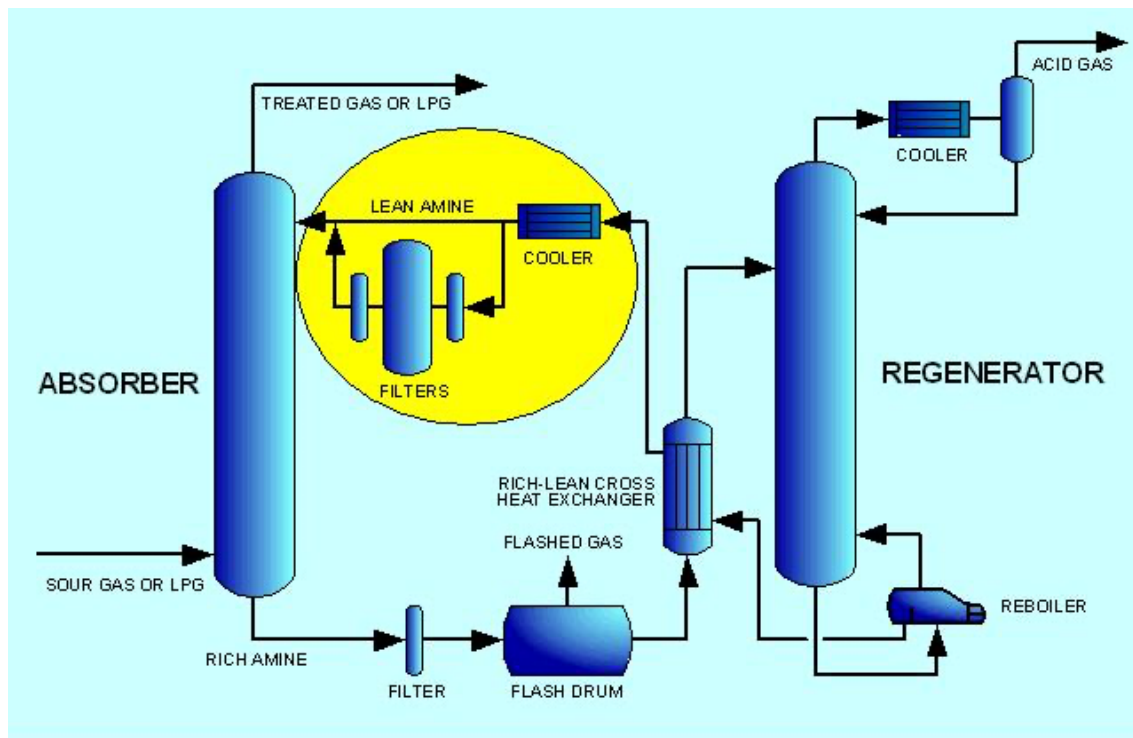
e-mail: specialtyamines@wimage.it

Date: _____

CUSTOMER INFORMATION:

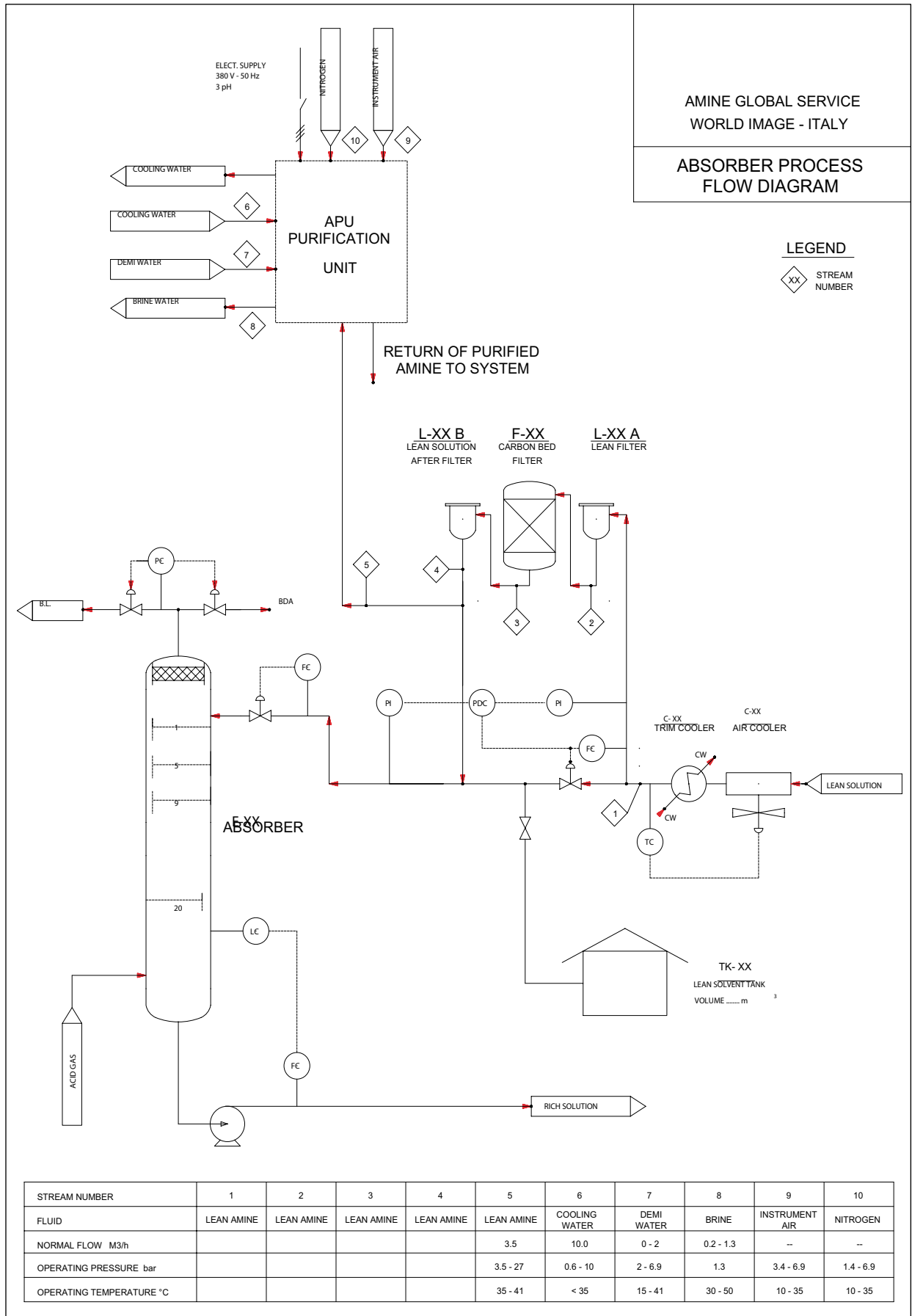
From : _____
Company : _____
Contact Name : _____
Location : _____
Phone : _____
E-mail: _____
Fax: _____

GENERAL PLANT LAY- OUT :



HOW TO USE THIS DOCUMENT:

This document can be filled in electronically at the appropriate fields. If wished, the document may first be printed and then filled in by hand and then faxed.





SOLVENT ANALYSIS REPORT

Location	Sample Date
Plant or Unit name	Received
Sample Number	Completed

Sample Properties

Amine Product	Sample Source
Sample Opacity	Sample Color
Solids, ppm	Sample pH

Acid Gas Loading

CO ₂ Weight Percent		CO ₂ Loading mole/mole	
H ₂ S Weight Percent		H ₂ S Loading mole/mole	

Amine concentration

Alkalinity Titration	wt%	
Gas Chromatograph	wt%	
Solvent Factor	wt%	

Heat Stable Salts :

Heat Stable Amine Salts	wt%	
Inorganic Heat Stable Salts	wt%	
Total Amine And Inorganic Heat Stable Salts	wt%	
HSAS Neutralized	wt%	

Metal By ICP

Chromium (Cr) ppm		Sodium (Na) ppm	
Copper (Cu) ppm		Nickel (Ni) ppm	
Iron (Fe) ppm		Calcium (Ca) ppm	
Potassium (K) ppm		Magnesium ppm	

Ion Chromatography

Acetate, ppm		Formate, ppm	
Chloride ppm		Sulfate, ppm	
Oxalate, ppm		Phosphate, ppm	
Thiosulfate, ppm		Thiocyanate, ppm	
Glycolate, ppm		Ammonia, mg/l	

Foaming Characteristics

As Received	Foam Height, cc	
	Break Time, sec	

Comments :

NOTE : If analytical results are not available we can perform the analysis on your samples.

Request to us a safety sample ship kit to **WORLD IMAGE SRL**